

COSBER



PLANNING MANUAL

Truck Play Detector

COSBER C-PD xx-Series

CONTENT

1	General.....	2
1.1	Important notes.....	2
1.2	Delivery.....	2
1.2.1	Scope of delivery	2
1.3	Tool	2
1.4	Units	2
2	Location.....	3
2.1	Outdoor installation.....	3
2.1.1	Assembly sketch of the play detector.....	3
3	Foundation	4
3.1	General information	4
3.2	COSBER Foundation Plans for Truck Articulated Play Tester	4
3.2.1	Foundation plan COSBER C-PD72	5
3.2.2	Foundation plan COSBER C-PD72 (at ground level).....	6
3.3	Foundation aids	7
3.3.1	Assembly drawing foundation frame	7
3.3.2	Assembly drawing foundation frame floor-level	7
4	Power	8
5	Installation requirements.....	9
6	Notes	10

1 General

1.1 Important notes

The following requirements must be met to ensure the correct installation of test benches. This document lists the minimum basic requirements.

- All designs must comply with local and national standards, guidelines, and regulations.
- The company is not liable for any defects or quality problems resulting from the violation of national or regional regulations.
- It is forbidden to distribute the design folder, foundation drawings, construction drawings, circuit diagrams and other documents to third parties without the permission of COSBER.

1.2 Delivery

- For unloading and moving, lifting tools (such as forklifts or cranes) required by the customer must be provided.

1.2.1 Scope of delivery

The following products are NOT included in the standard scope of delivery:

- Foundation frame or edge protection
- Empty conduit connection
- Mounting material for control unit

The products listed above can be purchased from COSBER.

1.3 Tool

To facilitate the installation, please prepare the following tool:

- Lifting tool for installation of the test bench.
- Electric conductor threading tool.
- Standard tool for control cabinet and test bench work.

1.4 Units

Unit Conversion Table:

Unit	Conversion unit
1 ft	0.305 m
1 m	3,281 ft
1 Inch	0.0254 m

1 m	39.37 Inch
10 N	1 kgf

2 Location

- The system and its components should be assembled in the workshop at the most suitable location.
- Always consider the needs of your customers, local or national regulations, safety requirements, operational or technical specifications, and take all requirements into account when deciding on a location and planning it.



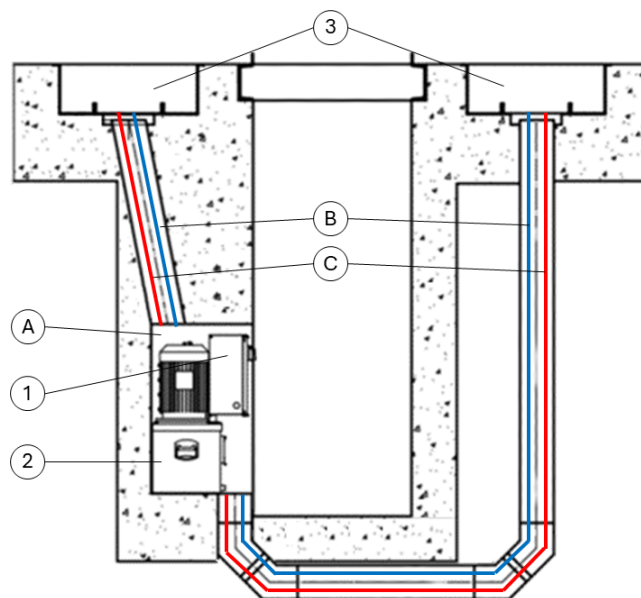
HINT!

**WHEN CHOOSING THE LOCATION, MAKE SURE THAT THERE IS A WAY TO ATTACH THE CONTROL CABINET.
(MOUNTING MATERIAL NOT INCLUDED)**

2.1 Outdoor installation

- In an outdoor installation, the power switch, hydraulic unit, remote control, and other electrical components/products should not be exposed to direct rain or snow.
- The test bench should be installed in suitable environments that meet the requirements for ambient temperature and humidity.

2.1.1 Assembly sketch of the play detector



Pos.	Designation	Connection
A	Power cord	Control cabinet – main switch (to be provided by the customer)
B	Signal Limit switch	Control cabinet – play detector (not for KNE version)
C	Hydraulic lines	Control cabinet – play detector. Cable length depending on requirements and installation location
Pos.	Designation	Connection
1	Radio receiver	Control cabinet – antenna
2	Hydraulic unit	Hydraulic power unit including control cabinet
3	Play detector	

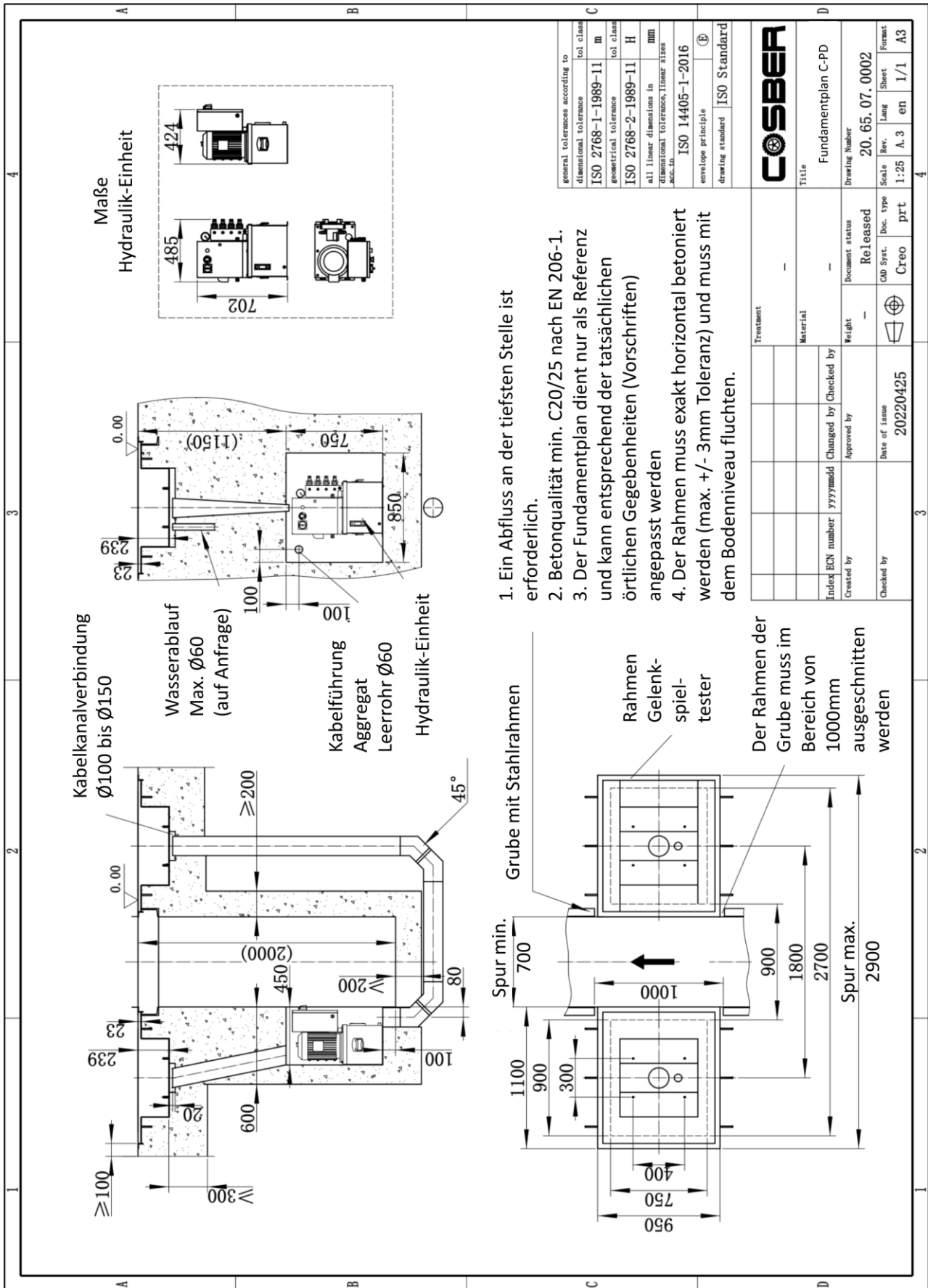
3 Foundation

3.1 General information

- The excavation pit as well as all connections and outlet openings must be created according to the foundation drawing.
- The excavation pit must stand on load-bearing soil.
- The size of the excavation pit must comply with the state conditions.
- The concrete quality meets at least the requirements of C20/25 DIN EN 1992-1-1 and includes a reinforced concrete network in the concrete that can withstand the maximum load on the test station.
- The floor level meets the requirements of DIN 18202.
- The bottom of the pit is flat on both sides, and the middle of the pit has a slope of 2% up to the water drainage.
- The maximum tolerance allowed for all sizes in the drawings is $\pm 1\text{cm}$.
- The cables (connections) run through the empty conduits provided for this purpose. These are to be equipped according to the drawing.
- Empty conduits must be laid underground.
- The cable duct must not be clogged under any circumstances.
- If you are using a foundation tray, edge protector or other accessories, fasten them in such a way that there are no floating movements or displacements during concrete.

3.2 COSBER Foundation Plans for Truck Articulated Play Tester

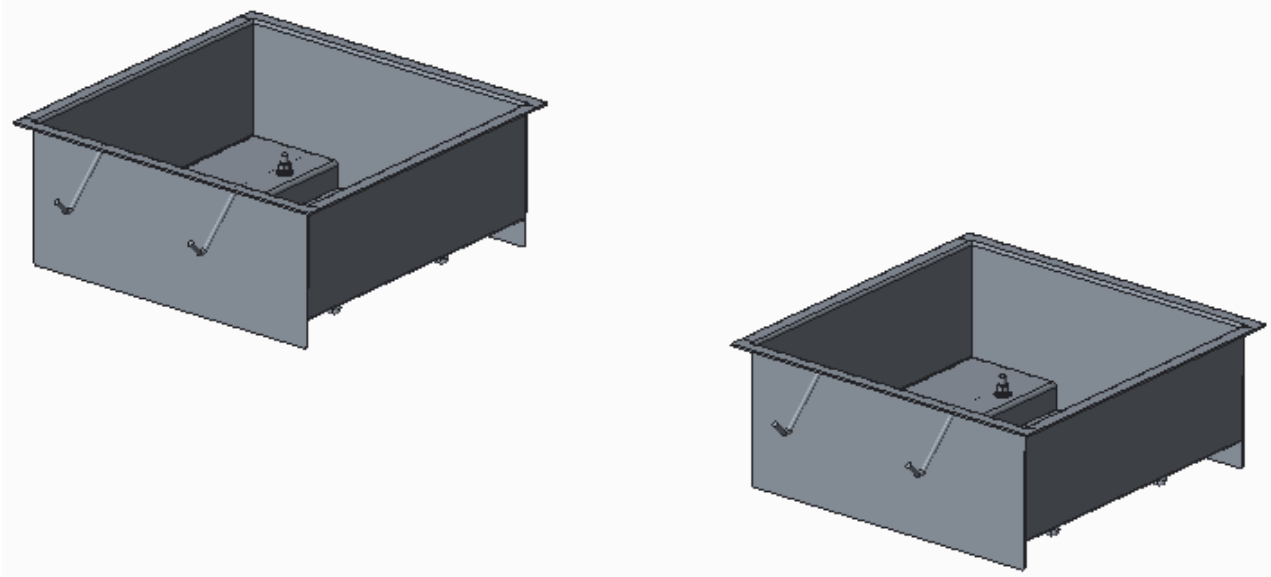
3.2.2 Foundation plan COSBER C-PD72 (at ground level)



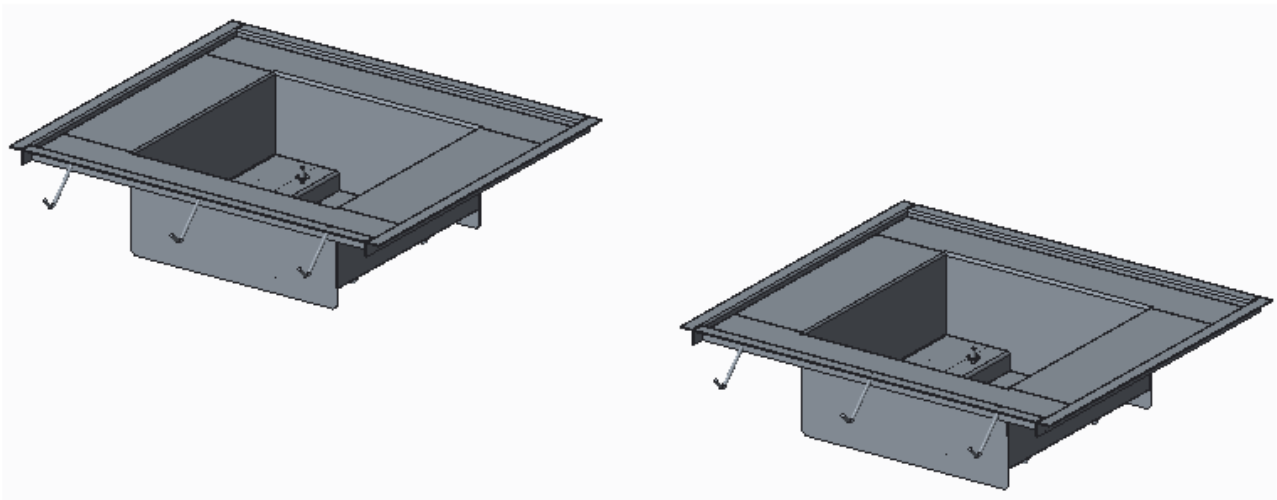
3.3 Foundation aids

Customers can choose various foundation aids according to their actual needs.

3.3.1 Assembly drawing foundation frame



3.3.2 Assembly drawing foundation frame floor-level



4 Power



WARNING!

**THE POWER SUPPLY OF DEVICE MUST COMPLY WITH LOCAL STANDARDS.
THE POWER SUPPLY AND THE ELECTRICITY CONNECTION MUST BE PROVIDED BY A LOCAL,
CERTIFIED ELECTRICIAN (QUALIFIED PERSONNEL).**

- Power supply of 400V
- Structure of the 3Ph + N + PE cables
- The power source must not be more than 3m away from the control cabinet.
- To ensure trouble-free operation of the device, the power supply must be equipped with a three-phase circuit breaker. In addition, appropriate grounding that meets local standards is required.
- Cable entry to the control box is from the side.
The hydraulic unit including the control cabinet is designed (as standard) for floor mounting.
The power cable is inserted laterally through a feed-through into the control box.
- Additional sockets:
 - A free 230V socket must be available for the remote control. This is to be selected depending on the storage location of the remote control.

Type	Power	Hedge	Cable cross-section
C-PD72	4.0 kW	32 A	5x 2.5mm ²

5 Installation requirements

- The infrastructure should meet all requirements.
- The concrete/foundation must meet all requirements and be fully cured.
- When assembling test benches, the lifting equipment required by the customer (such as a forklift truck or crane) must be made wide.
 - If it is not possible to provide an appropriate hoist, this must be clarified in advance with our employees.
- Scope of assembly:
 - Commissioning (electrical connection must be made by a locally certified electrician)
 - Instruction of the operating personnel
- NOT in the scope of assembly:
 - Necessary additional services for adaptations
 - Other material or ancillary costs
 - Concrete and foundation work.
 - Removal of the old test bench.

COSBER



COSBER GmbH
Lise-Meitner-Str. 3
82152 Krailling
GERMANY

Phone: +49 (0) 89 262 07 66-00
Fax: +49 (0) 89 262 07 66-60
E-mail: info@cosber.de
Web: www.cosber.de

